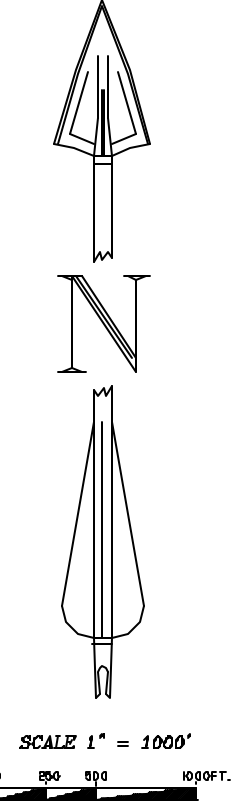
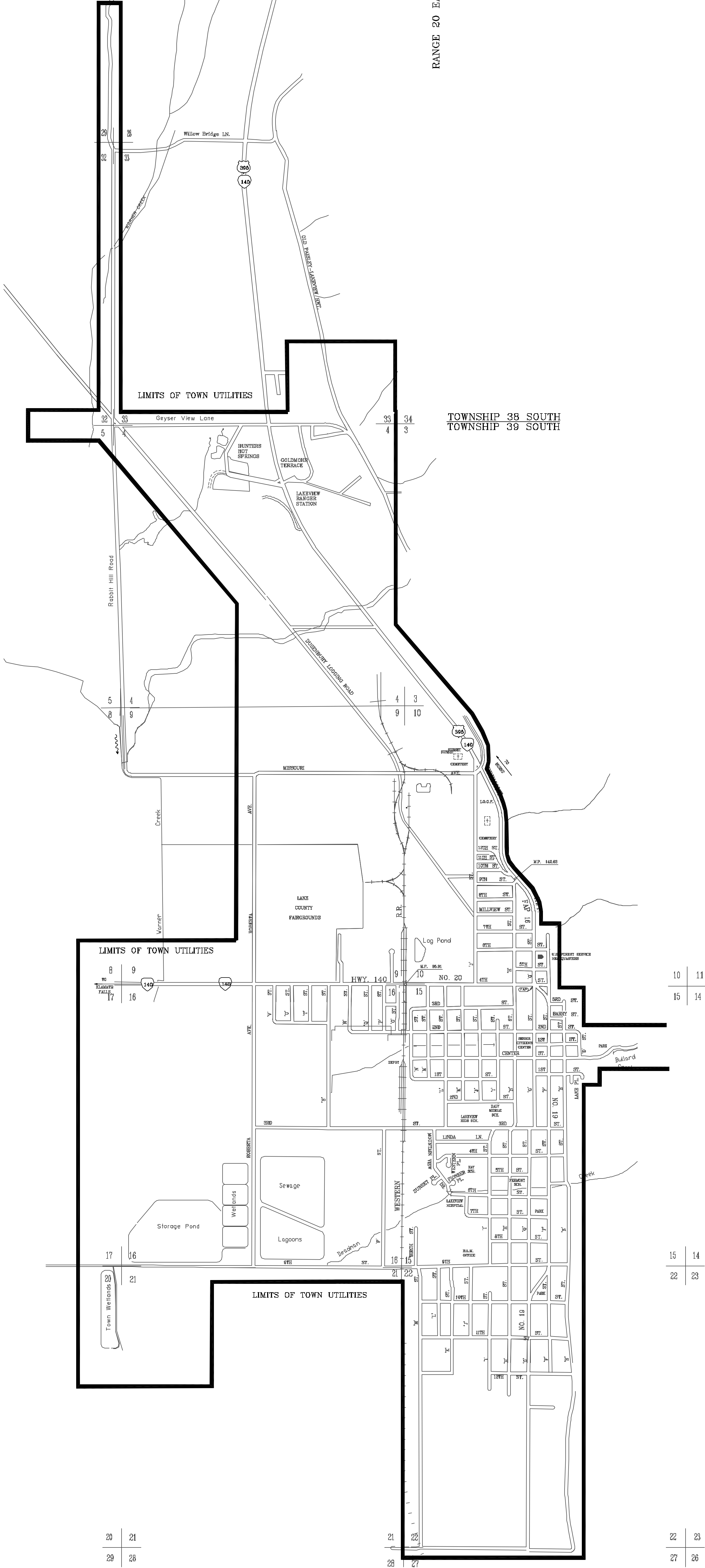


Department of
Corrections Site

RANGE 20 EAST



31 32
6 5



20 21
29 28

10 11
15 14

15 14
22 23

22 23
27 26

DATE: 03/07/2008
SCALE: 1"=1000'
DWG. BY: DLH
FILE: 2005-9
JOB NO.: 2005-9
SHEET
1

LAKEVIEW UTILITIES BOUNDARY
TOWN OF LAKEVIEW
UTILITY LOCATE MAP
LAKEVIEW, OREGON

PREPARED FOR:
TOWN OF LAKEVIEW
525 NORTH 1ST STREET
LAKEVIEW, OREGON 97630
(541) 947-2029

**ANDERSON ENGINEERING
AND SURVEYING, INC.**
P.O. BOX 28 LAKEVIEW, OREGON 97630 (541) 947-4407 FAX 947-2321
P.O. BOX 419 REDMOND, OREGON 97756 (541) 923-4307 FAX 923-4308

REVISIONS	BY